



WHERE NATURAL ENVIRONMENTS
& HUMAN INTERESTS INTERSECT

607 W. Morris Avenue
Hammond, LA 70403

409 Green Street
Thibodaux, LA 70301

P. 985.662.5501
F. 985.662.5504
www.elosenv.com

TABLE OF CONTENTS

Company Background & Experience	5
Company Background & Experience	
Key Personnel	
Education & Training	
Permitting Applications & Regulatory Compliance	11
Wetland Delineations / Jurisdictional Determination	
Permitting	
Biological Assessments & Monitoring	
Types of Biological Assessments	
Cultural Resources	
Environmental Services	17
National Environmental Protection Act (NEPA) Compliance	
Environmental Due Diligence	
Environmental Impact Analysis	
Categorical Exclusions	
Phase I, Phase II & Phase III Environmental Site Assessments	
Phase I Environmental Site Assessment	
Phase II Environmental Site Assessment	
Phase III Environmental Site Assessment	
Brownfields Program	
Soil & Groundwater Investigations	
Environmental Remediation Services	
Air Quality Services	
Water / Wastewater / Storm Water Permitting	
Solid & Hazardous Waste	
Solid Waste Management Services	
Hazardous Waste Management Services	
Permitting Services	
Operation & Compliance Services	
Contamination Assessment & Remediation Services	
Actions	
Industrial Hygiene Services	
Mold	
Asbestos	
Lead-Based Paint Testing	

TABLE OF CONTENTS

Coastal Restoration & Resilience Services ————— 29

- Coastal Restoration Planning, Project Development & Funding
- Coastal Resilience Planning
- Site Assessment & Analysis
- Ecosystem Restoration
- Climate Adaptation Strategies
- National Environmental Protection Act (NEPA) Compliance
- Coastal Use Permitting & Mitigation
- Construction Management & Environmental Monitoring
- Stakeholder Engagement
- Data-Driven Decision Making
- Grant Procurement for Local Communities
- Watershed Management & Flood Mitigation Planning, Project Development & Funding
- Post-Project Support

Innovative Technologies ————— 33

- Renewable Energy Site Selection
- Leak Detection & Repair (LDAR)
- Geographic Information System (GIS) Services
- Drone Services
- Abstracting Services
 - Why Abstracting Services?

Program & Project Management ————— 39

- Program Management
- Grant Management
- FEMA Public Assistance
- Disaster Recovery
- Construction Management



FOLLOW ME

Connect with us on social media.

Get all the latest news from ELOS, as well as updates to our service offerings and technologies.

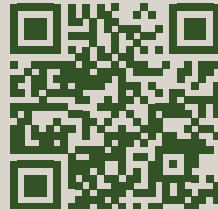
LinkedIn:

in



Facebook:

f



COMPANY BACKGROUND & EXPERIENCE



COMPANY BACKGROUND & EXPERIENCE

Established in 2006 by two young entrepreneurs from southeast Louisiana, ELOS is a professional consulting firm with a background in environmental services, offering an interdisciplinary approach to program and project management. We are part of Environmental Systems Group, backed by Bernhard Capital.

Our familiarity with federal, state, and local agencies — combined with rich expertise in relevant scientific technologies — has resulted in streamlined services for our clients, saving them immeasurable time and money while achieving their goals. Because of our familiarity with government programs and project processes, ELOS can provide invaluable services and support to private businesses and government entities at all levels — giving them more time to do what matters.

We help manage resources, develop grant proposals, and secure environmental clearances and permits for various projects. Our storied company history and background allow us to provide world-class program management, environmental consulting, Geographic Information System (GIS) services, and other innovative technological solutions to meet even the most complex client needs.

FOUNDERS



PRESIDENT
Lucas Watkins, MS

Lucas Watkins, President and founding Principal of ELOS, has over 21 years of experience as a professional consultant. He received his B.S. in Forest Management from Louisiana State University and his M.S. in Biology in Wetland Ecology from Southeastern Louisiana University. His experience covers environmental regulatory compliance as well as program and project management.



VICE PRESIDENT
James "Jay" Prather, III

James "Jay" Prather III, Vice President and co-founding Principal of ELOS, has over 20 years of experience as a professional consultant. He received his B.S. in Biology from Southeastern Louisiana University. Since founding ELOS, Mr. Prather has worked with clients at every level of government, as well as large and small private sector clients, meeting their goals and earning a reputation for providing excellent services.

KEY PERSONNEL

BRITTANY BERTHELOT, MS: COO / Mitigation Consultant

RONALD VENTOLA, ME: Director of Regulatory Affairs

BRIAN FORTSON, JD: Senior Ecologist / Permitting Specialist

STEHLE HARRIS: Vice President of Project Delivery

FLYNN DAIGLE: Senior Project Manager

KARIM BELHADJALI, MS: Senior Project Manager

MICHAEL BELLONE, PG, CHMM: Director of Environmental Services

JUSTIN DALEY, PHD: Director of Cultural Resources

CORY RICKS: Project Manager / Wetland Delineation Specialist

JOSH MACHECA: Industrial Hygiene Project Manager

TASTON BROOKSHIRE, MS: GIS Manager / Environmental Scientist

DRAKE ARNONE: President of Business Development

DALE HOLLEY: Business Development Associate

DANIELLE TRICHE: Business Development Associate

JERRY HALL: Business Development Associate

KEY PERSONNEL



CHIEF OPERATING OFFICER

Brittany Berthelot, MS

Brittany Berthelot, who serves as the Operating Manager of ELOS, received her B.S. in Biology from Southeastern Louisiana University and her M. S. in Environmental Science from Louisiana State University. Her technical skills support all ELOS service lines, working closely with ELOS staff and clients to ensure projects are completed in an effective and efficient manner.



DIRECTOR OF
REGULATORY AFFAIRS

Ronald Ventola, ME

With over 30 years of experience in regulation and management, Ronald Ventola advises clients in various regulatory matters. Mr. Ventola received his B.S. in Mechanical Engineering from Louisiana State University and his Master of Engineering in Mechanical Engineering from Tulane University. He served as the Chief of the Regulatory Branch in the New Orleans District for the U.S. Army Corps of Engineers.



SENIOR ECOLOGIST /
PERMITTING SPECIALIST

Brian Fortson, JD

Brian Fortson serves as the Senior Environmental Scientist at ELOS, providing technical expertise for regulatory permitting, agency consultation, wetland delineations, and other environmental services. Mr. Fortson holds a Bachelor of Science in Wetland Ecology from Southeastern Louisiana University and a Juris Doctor in Civil Law from Loyola University.



VICE PRESIDENT
OF PROJECT DELIVERY

Stehle Harris

Stehle Harris received his Environmental Management Systems B.S. degree from Louisiana State University. He excels in the development, management, and continual improvement of interdisciplinary teams. He has proven project management results in the creation of repeatable, auditable, production-oriented processes that reduce time and enhance efficiency for clients.



SENIOR PROJECT MANAGER

Flynn Daigle

Flynn Daigle has years of experience in many phases of environmental compliance, including the National Environmental Policy Act, wetland delineations, floodplain management, and more. He is well-versed in regulations governing Section 404 of the Clean Water Act and Section 10 of the Rivers and Harbors Act.



SENIOR PROJECT MANAGER

Karim Belhadjali, MS

Karim Belhadjali has over 20 years of experience in ecosystem restoration and storm and flood risk reduction. Along with his vast experience and knowledge, Mr. Belhadjali holds a M.S. in Fisheries from Louisiana State University and a Bachelor of Science in Marine Biology from Long Island University.

KEY PERSONNEL



DIRECTOR OF
ENVIRONMENTAL SERVICES

Michael Bellone, PG, CHMM

Michael Bellone has directed multi-disciplinary environmental projects at over 1,200 sites throughout the United States. Mr. Bellone provides senior oversight and assists ELOS with fieldwork, report writing, data processing, and file organization to complete projects concerning Phase I, II and III ESAs and other NEPA environmental assessment documentation.



DIRECTOR OF
CULTURAL RESOURCES

Justin Daley, PhD

Dr. Justin Daley's responsibilities include budgeting, staffing, delegation of tasks, project organization and development, consultation, field preparation and execution, proposals, 106 desktop reviews, and report production as well as QA/QC of all reports written within the cultural resource department.



PROJECT MANAGER /
WETLAND DELINEATION SPECIALIST

Cory Ricks

Cory Ricks serves as an Environmental Scientist, leading ELOS' field team in wetland delineation efforts for development, mitigation banking, and infrastructure projects. He also acts as the field team lead for biological surveys for threatened and endangered (T&E) species, migratory and colonial wading birds, and bald eagles while supporting field surveys for cultural resource investigations.



INDUSTRIAL HYGIENE
PROJECT MANAGER

Josh Macheca

Josh Macheca began his career at ELOS as a GIS specialist. Soon after, he began working as a licensed Louisiana Lead Paint Inspector and Lead Hazard Risk Assessor as part of the Restore Louisiana Program. Mr. Macheca continues to lead ELOS' team of industrial hygiene staff and serves as the project manager for ongoing industrial hygiene projects.



GIS MANAGER /
ENVIRONMENTAL SCIENTIST

Taston Brookshire, MS

Taston Brookshire has served as an environmental scientist and Geographic Information System (GIS) specialist at ELOS since he began in 2018. His responsibilities have included assisting in conducting wetland delineations, environmental site assessments, endangered species surveys, and Section 10/404 Clean Water Act permitting.



PRESIDENT OF
BUSINESS DEVELOPMENT

Drake Arnone

Drake Arnone graduated from Southeastern Louisiana with a B.S. Degree in Biology. He served as an Environmental Scientist at ELOS when he began in 2017. Since then, he has worked in a variety of positions at ELOS and is now President of Business Development. Some of his duties include overseeing the Business Development team, managing client relations, and coordinating project personnel and logistics.

KEY PERSONNEL



BUSINESS DEVELOPMENT
ASSOCIATE

Dale Holley

With over 15 years of experience in professional office management and a track record of strong performance in Business Development, Dale Holley skillfully manages client relations at ELOS. Ms. Holley uses her management skills and industry knowledge to engage ELOS' project teams and key personnel and ensure the client's project specific needs are met in a timely and professional manner.



BUSINESS DEVELOPMENT
ASSOCIATE

Jerry Hall

Jerry Hall served in the United States Marine Corps Reserve and has been a part of the ELOS team since February of 2020. Before joining ELOS, Jerry worked as a District Conservationist for the Natural Resources Conservation Service (NRCS) for more than 36 years. With ELOS, he uses his government expertise to assist in the coordination of large-scale conservation and restoration projects.



BUSINESS DEVELOPMENT
ASSOCIATE

Danielle Triche

A licensed real estate agent, Danielle Triche brings to ELOS a wealth of customer service skills, helping her communicate with clients in an efficient and effective manner. She also has extensive experience with contracts, negotiations, and the legal issues that can often accompany property and property development.

EDUCATION & TRAINING

Our scientists hold degrees in various professional and scientific fields. Most of our associates hold licenses, accreditations, training, advanced degrees, and professional affiliations, including:

- 40-Hour HAZWOPER
- American Institute of Certified Planners (AICP)
- American Society of Testing & Materials (ASTM)
- FAA Part 107 Remote Pilot Certification
- Federal Energy Regulatory Commission (FERC) Regulatory Overview & Guidance
- Federal Energy Regulatory Commission (FERC) Environmental Compliance
- FEMA Introduction to Incident Command Structure
- FEMA National Incident Management System (NIMS)
- LDAF Certified Arborist (Certification No. 130294)
- LDAF Certified Prescribed Burn Manager
- Louisiana Department of Wildlife & Fisheries Boating Course
- LDEQ certified Asbestos Inspectors
- LDEQ/EPA Certified Lead Inspectors/Risk Assessors
- Louisiana Pesticide Applicator
- LSU Leadership Training
- NHI Course No. 142005, NEPA & the Transportation Decision Making Process
- NPDES Certified Erosion Inspector
- Phase I, Phase II and Phase III Environmental Site Assessments for Commercial Real Estate
- Professional Logger's Erosion Control
- Real Estate Assist Program
- Stormwater Management
- USGS Wetland Remote Sensing & Mapping
- USACE Wetland Findings Report Certification
- Wetland Rapid Assessment Procedure (WRAP)



PERMITTING APPLICATIONS & REGULATORY COMPLIANCE

Obtaining the necessary permits is essential for projects that involve activities impacting the environment, natural resources, or public lands. Our team of professionals specializes in guiding clients through the permitting processes, ensuring compliance with applicable laws and regulations while streamlining the application process.

Our permitting services assist clients in navigating the complex landscape of permit applications. From addressing concerns about threatened and endangered species to securing special use permits for accessing state lands, we understand the challenges of obtaining permits. With our expertise in the permitting process, we aim to simplify the application process and minimize delays while ensuring complete and total compliance with all relevant regulations and requirements.



WETLAND DELINEATIONS / JURISDICTIONAL DETERMINATIONS

Wetland Delineations and Jurisdictional Determinations are a primary part of the state and federal regulatory focus. Knowing what areas are wetlands and, therefore, subject to regulation is often the first step in project planning and regulatory processes. In many cases, the existence of wetlands and regulated waters may require federal permitting due to agencies having jurisdiction over the proposed area.

We specialize in conducting wetland delineations and jurisdictional determinations to help our clients understand the extent to which the regulatory framework will impact their projects. Understanding the extent and jurisdictional status of wetlands is essential for compliance with environmental regulations.

Our team has decades of combined experience in wetland field data collection and delineation and specializes in accurately identifying and mapping wetlands in typical and difficult terrain. With a comprehensive wetland assessment, we can advise clients in advance of design how to best avoid or minimize regulatory involvement once the jurisdictional footprint of a project has been identified.

PERMITTING

ELOS has a wealth of experience in assisting clients with regulatory compliance and helping them manage the permitting landscape. We understand the underlying statutory and scientific bases of the permitting process. We effectively manage the interaction among regulatory agencies and help clients to understand the complexities of multi-level and multi-agency authorizations.

We have established long-standing relationships with regulatory agencies and developed trust, enabling us to communicate effectively on our client's behalf. We have a proven track record of delivering exceptional results for our clients, consistently securing the necessary permits and authorizations to move their projects and interests forward.

For clients faced with the possible repercussions from potential impacts on environmental resources, our knowledge across various commercial, residential, and industrial disciplines and in both the private and public sectors positions us as a valuable asset. Some of the more prominent state and federal statutes and project types that form the base of our permitting activity include:

- Section 404/10 Clean Water Act, Rivers and Harbors Act (USACE)
- Coastal Use under Coastal Zone Management Act (LDNR)
- Section 14 Rivers and Harbors Act (408 Permits) USACE Permissions & Levee Safety Permits
- Threatened and Endangered Species Act (USFWS/NMFS)
- NPDES/LPDES (LDEQ), including Storm Water Pollution Prevention Plans
- Scenic Stream Consultation & Permitting
- Geotechnical Investigation Permitting
- Burn Variances
- Special Use Permits
- State Lands / Water Bottoms Permits
- Coast Guard Permits
- Resilience Carbon Injection Wells

By partnering with us, clients can benefit from our expertise, streamlined processes, and comprehensive support from application preparation to compliance monitoring. We aim to help clients obtain the necessary permits efficiently and ensure compliance with environmental regulations, allowing them to proceed with their projects.



BIOLOGICAL ASSESSMENTS & MONITORING

A large part of ELOS' practice focuses on providing comprehensive solutions for assessing and monitoring biological resources. Biological assessments and monitoring play a vital role in understanding the condition and trends of ecosystems, species populations, and the environment's overall health. These assessments provide valuable information for conservation efforts, land management, and regulatory compliance.

In permitting, assessments of endangered species are often mandatory. In compensatory mitigation banking, biological performance defines the success of the bank in both a financial and biological sense.

We understand the principles that guide the evaluations of habitat quality, biological performance, species of concern, critical habitat, and mitigation bank performance and work well with the agencies that review those assessments. Our team of field biologists specializes in ground-level data collection in difficult environments and reasonable interpretation of that data in well-formulated reports. By employing both accepted techniques and advanced methodologies, we deliver accurate data and actionable insights to support informed decision-making. For habitat restoration projects, success will depend on the field assessment of the biological improvements and the degree to which they are achieved.

By partnering with us, clients can benefit from our expertise in planning and conducting biological assessments and project monitoring capabilities. We can improve project planning by assessing potential impacts, ensuring compliance with regulatory agencies and organizations, and implementing effective monitoring programs for continual support and informing decision-making processes. Our goal is to assist clients in achieving their project objectives while minimizing ecological risks and ensuring regulatory compliance.



Types of Biological Assessments

Endangered Species Assessments

Projects can impact areas that support endangered species. When this is the case, agencies will need information about the species and habitat on the project site to determine how likely harmful impacts are. ELOS' field team is experienced in identifying suitable habitats and evidence of endangered species in the Southeastern U.S. Region. We can make thorough assessments, predict impact likelihood, and coordinate with agencies through final clearance. This knowledge is also essential for designing conservation plans, establishing protected areas, and ensuring compliance with regulatory requirements.

Wetland Restoration and Compensatory Mitigation

ELOS routinely conducts biological performance monitoring on commercial mitigation projects and wetland restoration projects in various wetland habitats. Extensive vegetative, soil, hydrology, and wildlife data collection and interpretation are required to document ecological success in wetland mitigation and restoration activities. ELOS has many years of experience assisting clients with maintaining ecological balance and supporting biodiversity as part of a structured restoration or mitigation plans.

Bird Nesting Assessments / Abatement

In some projects, agencies will require an assessment of the potential impact on colonial nesting birds, migratory birds, or other birds protected by statute or treaty. Bald eagles and ospreys, shore birds (several of which are threatened or endangered), wading birds, and migratory songbirds are present in many project areas and protected to varying degrees. ELOS field biologists are experienced in identifying protected birds, planning for nest avoidance, and working with construction managers and wildlife agencies to discourage bird use in active construction areas.

Construction Compliance Monitoring

ELOS' experience in environmental regulatory permits allows us to assist clients during the post-permitting project implementation phase by synthesizing the many permits authorizing the work and advising the client through construction to ensure that the work remains compliant with the regulatory provisions contained in the authorizations. Large construction or infrastructure projects can benefit tremendously from the reduced risk of enforcement action or regulatory work stoppage.



CULTURAL RESOURCES

“Cultural resources” signifies the material traces of past human activities. These include historic districts and structures, archaeological sites, cemeteries, shipwrecks, and artifact scatters. Historic properties are cultural resources that are at least 50 years of age and may potentially be eligible for listing on the National Register of Historic Places (NRHP). If a proposed undertaking requires federal permitting, it will be required to account for any potentially adverse effects on historic properties under Section 106 of the Historic Preservation Act. Undertakings may also be subject to state, tribal, and local regulations.

At ELOS, we help guide clients through the sometimes complex rules and regulations surrounding cultural resources so they may fulfill their legal obligations and proceed with their undertakings. This includes consulting with State Historic Preservation Offices (SHPO) and relevant stakeholder groups and performing any necessary cultural resource investigations.

Our dedicated team of Registered Professional Archaeologists and Architectural Historians have deep and broad expertise in both terrestrial and maritime archaeology, including desktop reviews, Phase I surveys, Phase II evaluations, and Phase III data recoveries, as well as historic structure evaluation, historic preservation and curation, and drafting and negotiating Memorandums of Agreement.

Additional services include ethnography, construction monitoring, tribal consultation, expert witness testimony, low-altitude drone imaging, and ground penetrating radar and remote sensing. Our experts have regional experience throughout the majority of the United States, including the Northeast, Southeast, Southwest, and Midwest.

These services aim to ensure our clients comply with all legal requirements so their projects may proceed as planned with minimal disruption. Our consultants help clients make informed decisions regarding project design and implementation to avoid costly impacts or delays, evaluate the potential requirements of a project, and mitigate adverse effects on any historic properties.

Whether you are embarking on a construction project, planning a land development initiative, determining potential exposure or seeking to comply with legal requirements, ELOS is here to support and guide you through the process.



ENVIRONMENTAL SERVICES

NATIONAL ENVIRONMENTAL PROTECTION ACT (NEPA) COMPLIANCE

The National Environmental Policy Act (NEPA) was signed into law on January 1, 1970. NEPA requires an assessment of the environmental effects of certain proposed actions. The range of actions covered by NEPA is broad and includes the following:

- Making decisions on permit applications
- Adopting federal land management actions
- Constructing highways and other publicly-owned facilities

ELOS is an expert in assisting clients in navigating the often-complex NEPA process. ELOS can evaluate the environmental and related social and economic effects of proposed actions and assist clients in steering their projects to minimize impacts and facilitate navigating NEPA compliance. As part of the NEPA requirements, we can also coordinate all public review and comment periods on those evaluations.



ENVIRONMENTAL DUE DILIGENCE

ELOS personnel have extensive experience in providing environmental due diligence services to mergers and acquisitions (M & A) and investor communities. ELOS personnel have directed or maintained significant roles in multi-million to multi-billion dollar M & A activities. These projects have involved various types of industries from large national convenience store chains to multinational diversified manufacturing conglomerates.

ENVIRONMENTAL IMPACT ANALYSIS

ELOS' professionals have extensive experience conducting Environmental Impact Analyses (EIA) for private, commercial, state, and federal entities.

Our scientists have completed a wide range of Environmental Impact Analyses, from single-site assessments to programmatic environmental impact analyses for multi-site construction activities.

CATEGORICAL EXCLUSIONS

Projects determined to have little or no significant environmental impacts are classified as Categorical Exclusions (CEs) under NEPA. This determination is reached once federal funding agencies have received documentation that outlines any potential impacts a project may have on environmental, cultural and economic resources.

ELOS can conduct background research required for federal agencies to determine if a project meets the criteria for a CE. Once a decision is reached, ELOS can coordinate with federal and state agencies, guide clients through the NEPA process, and provide clients with all documentation necessary for a CE.

ELOS has completed CEs for numerous projects funded through federal agencies such as the U.S. Department of Housing and Urban Development (HUD), the Federal Emergency Management Agency (FEMA), and the Louisiana Department of Transportation and Development (La DOTD).

PHASE I, II & III ENVIRONMENTAL SITE ASSESSMENTS

With the passage of the Comprehensive Environmental Response, Compensation and Liability Act (CERCLA) in 1980, owners and purchasers of properties and businesses may be placed in a serious liability situation if a purchased property is contaminated with toxic or hazardous substances.

An Environmental Site Assessment (ESA) provides the buyer, seller, developer and the financial institution with the information necessary to evaluate and negotiate property acquisitions from a position of strength. A corporation, banker, lawyer, realtor or investor who becomes more knowledgeable in assessing and minimizing the risks will be more comfortable with the real estate transaction and have more protection against personal or corporate liability.



Phase I Environmental Site Assessment

The purpose of a Phase I Environmental Site Assessment (ESA) is to determine the environmental condition of the property and identify any possible environmental contamination. It is a detailed report that researches and assesses a property's current and historical environmental uses.

A Phase I ESA includes, but is not limited to, on-site inspection, interviews, regulatory database reviews, and non-invasive examination that looks for:

- Potential soil contamination
- Groundwater and surface water quality
- Asbestos, lead or mold containing building materials
- Hazardous materials storage

- Potential sources of hydrocarbon contaminants
- Potential sources of chemical residues
- Potential sources of dead vegetation
- An inventory of hazardous substances stored / used on site
- A cursory review of previous studies and permits

Phase II Environmental Site Assessment

A Phase II ESA is undertaken when a Phase I ESA determines a likelihood of site contamination. The purpose is to analyze for qualitative and quantitative values of various contaminants.

It includes collecting in-situ samples of soil, hydrocarbons, groundwater, and building materials. A Phase II ESA may also include groundwater monitoring, fate and transport studies, 3-D modeling, and the design of feasibility studies for remediation and remedial plan.

The most frequent substances tested are petroleum hydrocarbons, heavy metals, pesticides, solvents, asbestos, and polychlorinated biphenyls (PCBs).

Phase III Environmental Site Assessment

A Phase III ESA is remediation of a contaminated site(s). It consists of the development and implementation of a Risk-Based Remediation Action Plan, with consideration for and assessment of:

- Alternative cleanup methods
- Cost/benefit analysis
- Logistics



BROWNFIELDS PROGRAM

The Environmental Protection Agency's (EPA) Brownfields Program provides grants and technical assistance to assess, safely clean up and sustainably reuse contaminated properties. Revitalizing contaminated properties transforms not just the land but also the surrounding communities.

Brownfield sites may be small parcels in your local neighborhood or large abandoned industrial properties. The presence of contamination, or the fear of potential contamination, and the desire to redevelop / reuse a property is all it takes to be considered a candidate for Brownfield incentives.

Depending on the location and characteristics of the property and market factors, a Brownfield site often can be redeveloped for uses ranging from housing, retail, industrial, or mixed-use to public and non-profit uses such as parks, recreational areas and municipal facilities.

Benefits of Addressing Brownfield Sites

- Helps address legacy contamination at abandoned sites more expediently
- Liability protection for non-responsible parties provides an incentive to developers to repurpose Brownfield sites
- Communities benefit by returning properties to tax rolls and increasing the tax base
- Adds jobs both during the cleanup and construction phase and after the redevelopment is complete
- Reduces blight in communities and residents' risk of exposure to environmental contamination
- For developers, Brownfield properties may be eligible for additional tax credits / financial incentives and are often in key locations

ELOS' experienced team can help you identify potential Brownfield sites and provide the agency coordination to both get the property into the program and help you navigate through the complete process.



SOIL & GROUNDWATER INVESTIGATIONS

At ELOS, you will find every soil and groundwater service you need, from performing studies of groundwater contamination events to installation of state-of-the-art remedial systems. We maintain the equipment and personnel to provide geophysical logging, pumping tests, and aquifer studies necessary for complete groundwater evaluations.

We also specialize in the investigation of facilities where contamination has taken place, as well as groundwater restoration and treatment. Our professionals' experience in working with regulatory agencies enables our clients to effectively reach compliance with applicable regulations and laws, including the Resource Conservation and Recovery Act (RCRA), the Clean Water Act (CWA), the Safe Drinking Water Act (SDWA), and the National Pollutant Discharge Elimination System (NPDES) regulations.

You will not find another company more experienced or committed to providing the groundwater services you need to ensure clean, uncontaminated groundwater. Our services include:

- Compliance with RCRA
- Performing studies of groundwater contamination events
- Preparation of detailed technical reports documenting hydrogeological conditions, findings of studies and recommendations
- Design and implementation of remedial action plans for contamination situations
- Preparation of groundwater monitoring plans
- Installation of state-of-the-art monitoring wells
- Geophysical logging of wells



ENVIRONMENTAL REMEDIATION SERVICES

ELOS' remediation professionals include environmental scientists, chemists, supervisors, equipment operators and hazardous materials technicians with the ability to provide clients with common-sense, cost-effective solutions to needs, without compromising quality.

Remediation services include:

- Underground storage tank or aboveground storage tank services
 - Tank removal or closure-in-place
 - Tank installations
 - Tank cleaning
- Treatment of soil, groundwater and sludges (chemical and biological)
- Soil Vapor Extraction (SVE) system installation and operation
- Groundwater extraction system installation and operation
- Hazardous waste site cleanup (surface and subsurface)
- Dewatering of hazardous and non-hazardous sludges
- Drum characterization and disposal
- Chemical transfers
- Lab packs
- Disposal of hazardous and non-hazardous waste for generators to maintain or gain RCRA compliance
- Landfarming / Soil burning / Disposal arrangements
- Facilities decontamination and / or restoration or demolition
- Technician rental services
- Scheduled industrial maintenance, including tank cleaning

AIR QUALITY SERVICES

ELOS' air quality specialists have extensive experience planning and executing the technical aspects of compliance. Our associates are familiar with all regulated parameters and are well positioned to address the many complex issues emerging from the Clean Air Act Amendments by providing services such as:

- Permitting
 - Title V
- Prevention of Significant Deterioration (PSD)
 - Major sources
 - Compliance with national ambient air quality standards
- Air Toxics
 - Maximum Available Control Technology (MACT)
 - Source categories
 - Early reduction studies
 - State and local regulations
 - National Emission Standard for Hazardous Air Pollutants (NESHAP)
- Environmental Compliance Audits
 - Review federal, state and local regulations
 - Emissions inventory

WATER / WASTEWATER / STORMWATER PERMIT SERVICES

ELOS' services range from the design of groundwater monitoring plans and installation of monitoring wells to regional water resources planning. Our associates are experts at developing feedwater systems for reverse osmosis, geophysical logging, pumping tests and aquifer studies necessary for complete groundwater evaluations.

Our professionals' experience in working with regulatory agencies enables you to effectively reach compliance with applicable regulations and laws, including RCRA, the CWA, the SDWA, and the NPDES regulations.



Water and wastewater services include:

- Compliance with RCRA, the CWA, the SDWA and the NPDES
- Water supply studies
- RCRA corrective action
- Regional water resources planning
- Reverse osmosis feedwater systems
- Irrigation water supply
- Water quality investigations
- Saltwater intrusion control
- Injection well technology
- Preparation of groundwater monitoring plans
- Sampling and analysis plans
- Installation of state-of-the-art monitoring wells
- Geophysical logging of wells
- Performing studies of groundwater contamination events
- Design and implementation of remedial actions for contamination situations
- Preparation of detailed technical reports
- Wastewater treatment plant design
- Treatment system design, retrofit, operations and maintenance
- Environmental audits
- Annual reports
- Process design
- Effluent use / reuse
- Permitting, reporting
- Process evaluations
- Remedial investigations and contamination studies
- Remedial action plan design and implementation



SOLID & HAZARDOUS WASTE

Solid Waste Management Services

As the importance of proper management of the wastes produced daily in every industry has grown, ELOS' professionals have become recognized for their expertise in this area. Our associates achieve compliance with regulatory requirements through a blend of innovative technology supported by sound, practical application of traditional expertise - a blend that is increasingly important because of the pace of regulatory change in solid waste management.

Your company benefits from our thorough understanding of the demands of regulatory agencies and the realities of waste facility management. The diverse group of professionals at ELOS distinguishes us as one of the few consulting firms that can offer the complete range of services required for quality solid waste management.

Solid waste services include:

- Landfill design
- Compliance with Subtitle D of RCRA
- Site selection assistance
- Solid waste facilities design
- Construction observation and inspection
- Environmental audits
- Remedial investigations
- Feasibility studies
- Waste analysis plans
- Contingency plans
- Site security plans
- Closure plans
- Facility description
- Facility closure
- Closure certification and construction management
- Remedial action plan design and implementation
- Preparation of technical reports
- Wetlands delineation
- Soil borings
- Process information for all facility activities



Hazardous Waste Management Services

ELOS is a multi-disciplinary firm with the capabilities and experience to assist industries in meeting the many challenges associated with hazardous or toxic materials and waste quickly and cost effectively. Our certified associates and hazardous materials managers can provide the technical support and expertise necessary to minimize the cost and maximize the effectiveness of hazardous materials and waste management programs.

Permitting Services

- Facility siting
- RCRA Part A and Part B permitting
- State and local requirements
- Spill Prevention Controls and Countermeasure (SPCC) plans
- Waste determination and characterization
- Expert representation at regulatory agency and public hearings
- Negotiation of permit conditions
- Stormwater runoff (NPDES)
- Air emissions evaluation and reporting

Operation & Compliance Services

- Technical representation during rulemaking
- Environmental monitoring
- Compliance audit and maintenance programs
- SARA Title III programs
- Support in hazardous waste delisting
- Waste minimization / recycling programs
- Technical support during enforcement actions
- Closure assessment and monitoring

Contamination Assessment & Remediation Services

- RCRA corrective action programs
- Superfund remedial investigations / feasibility studies

Actions

- Contaminant fate and transport modeling
- Risk assessments and development of alternate site rehabilitation levels
- Contamination assessment reports and remedial action plans for non-superfund sites
- Solid waste management units assessment and remediation
- Quality assurance project plans for both superfund and state projects
- Negotiations with regulatory agencies at federal, state and local levels



INDUSTRIAL HYGIENE SERVICES (MOLD, ASBESTOS AND LEAD)

Trust our team to provide accurate information needed to inform decision making, ensure safety of workers and occupants, and meet regulatory requirements.

Our staff members consist of certified EPA / DEQ licensed lead paint inspectors and risk assessors, DEQ certified asbestos inspectors and workers, experienced mold technicians, and Certified Industrial Hygienists.

ELOS regularly provides clients with technical support on:

- Program audits to assess compliance with regulatory requirements
- Evaluation of worker exposure to potentially hazardous substances
- Development of written protection strategies to control environmental hazards
- Development of written health and safety plans
- Development and implementation of training programs
- Development and implementation of field sampling strategies for workplace exposure
- Written recommendations from field study results to minimize employee exposure
- Development and implementation of indoor air quality investigations (Sick Building Syndrome)



Mold

Mold is everywhere, but only becomes a problem when the concentrations are too high and it causes problems to human health, or when it is unsightly and causes damage to property.

When these conditions arise, ELOS tests for mold using industry-standard techniques, such as swab sampling, tape lift sampling, and air sampling. Our professionals also use cutting-edge infrared imaging and moisture reading instruments to detect and note conditions that are likely to lead to future microbial growth hazards. The results of these tests, along with experienced observation, allow our professionals to provide data-supported measurements of the type and amount of mold present and identify potentially hazardous conditions.

Asbestos

Asbestos is a naturally occurring mineral composed of soft, flexible fibers that are heat resistant. The Asbestos Hazard Emergency Response Act of 1986 legally recognizes six forms of asbestos that are harmful to human health.

When it comes to asbestos, precaution and safety are critical. ELOS' DEQ-certified asbestos inspectors are trained and experienced in recognizing materials that are typically suspect for asbestos. ELOS inspectors have completed inspections and surveys for private, commercial, and government clients and are experts in the regulations that govern the proper handling of asbestos-containing materials.

Our inspectors work with our clients to ensure the inspection and sampling methods are thorough, ensuring no hazardous asbestos-containing materials go unnoticed, while also being as cost-effective as possible to suit our client's budgetary needs. If you have any concerns that your project may disturb asbestos-containing materials, let our professionals take the fear of the unknown away by providing you with the answers and information you need.



Lead-Based Paint Testing

Lead is a toxic metal that can have potentially harmful health effects if absorbed into the body. Lead-based paint can be found in buildings built before the U.S. Consumer Product Safety Commission banned the use of lead-based paint in 1978.

ELOS' staff of DEQ and EPA licensed lead paint inspectors and risk assessors use state-of-the-art, non-invasive testing methods to test for lead-based paint products in structures for private, commercial, and government clients, as well as assess the condition of the paint to note whether it is in a hazardous, deteriorating condition.

Using X-Ray Fluorescence (XRF) analyzers, our professionals can quickly and accurately measure the content of lead in painted surfaces throughout a structure. The XRF analyzer provides results instantly and with no need to disturb or damage the painted surface. The use of XRF technology means cost and time savings for our clients by eliminating the need for laboratory analysis of paint chip samples.

Since our founding, ELOS professionals have completed nearly 5,000 combined lead paint inspections and risk assessments for the Restore Louisiana Program, which provides grant funding to homeowners affected by 2020-21 storms for home repairs, reconstruction and / or reimbursement for repairs already completed.

The program is administered by the Louisiana Office of Community Development and is funded by the U.S. Department of Housing and Urban Development through federal appropriations of Community Development Block Grant-Disaster Recovery (CDBG-DR) funds.

ELOS also completed approximately 4,000 inspections and risk assessments for the New York City Housing Authority, and we regularly work in support of local housing authorities and facility management personnel throughout Louisiana.

A full-page background image of a coastal scene. In the foreground, gentle waves with white foam wash onto a sandy beach. The water is a light blue-grey color. In the background, a line of dark, silhouetted trees is visible against a pale, hazy sky. The overall lighting is soft and warm, suggesting late afternoon or early morning.

COASTAL RESTORATION & RESILIENCE SERVICES

At ELOS, we are dedicated to restoring and enhancing coastal ecosystems through our specialized expertise in coastal restoration and resilience. With a deep understanding of the unique local needs, we offer a comprehensive suite of services that address project planning, management, regulatory compliance, and monitoring. Our commitment to sustainability and environmental stewardship drives our every action as we partner with clients to protect communities and coastal resources.

COASTAL RESTORATION PLANNING, PROJECT DEVELOPMENT & FUNDING

The ELOS team excels in overseeing restoration projects, managing the seamless coordination of multiple projects to achieve broader ecosystem restoration objectives.

Specific service offerings include:

- Local coastal master planning
- RESTORE Act Direct Component Multiyear Implementation planning
- Natural Resource Damage Assessment (NRDA) project development
- Comprehensive funding strategies for coastal restoration projects

COASTAL RESILIENCE PLANNING

We develop strategic master plans that prioritize coastal habitat needs and community resilience.



SITE ASSESSMENT & ANALYSIS

Our experts conduct thorough assessments to understand the current state of coastal areas, identifying vulnerabilities and opportunities for restoration and resilience improvements.

ECOSYSTEM RESTORATION

ELOS implements habitat restoration projects that restore eroded coastal habitats and promote healthy coastal ecosystems.

CLIMATE ADAPTATION STRATEGIES

Our team designs adaptive measures that anticipate and mitigate the impacts of climate change, promoting long-term sustainability for coastal communities.

NATIONAL ENVIRONMENTAL PROTECTION ACT (NEPA) COMPLIANCE

We navigate complex regulatory landscapes, including the National Environmental Policy Act (NEPA), ensuring that restoration and resilience projects meet environmental requirements. ELOS has the capacity to conduct a combination of on-site, drone flight, and desktop inspections for the purpose of assisting clients with NEPA compliance.

Specific service offerings include:

- Categorical exclusion documentation
- Environmental Assessments
- Environmental Impact Statements



COASTAL USE PERMITTING & MITIGATION

ELOS is experienced in preparing and evaluating coastal use permits (CUPs) and others that may be required in the coastal zone. Our team of experts also advises clients regarding mitigation requirements and mitigation instruments. We guide clients through the intricate permitting process, streamlining approvals for projects while adhering to environmental regulations. Specific service offerings include:

- Section 404 permitting
- Section 408 permitting
- Mitigation instrument development and administration
- In-lieu fee instrument development and administration

CONSTRUCTION MANAGEMENT & ENVIRONMENTAL MONITORING

ELOS has a team of experts who are experienced in managing construction projects in the coastal zone and developing and implementing environmental monitoring plans for coastal restoration projects. We establish robust monitoring programs to track project success and adapt strategies as needed, ensuring sustained project benefits over time.

DATA-DRIVEN DECISION MAKING

ELOS leverages advanced GIS data analytics to inform project decisions, optimizing resource allocation and project outcomes for our clients.

GRANT PROCUREMENT FOR LOCAL COMMUNITIES

We assist local communities in navigating the complexities of government grant programs, ensuring they can access funding opportunities for coastal resilience projects and make the most of available resources.



WATERSHED MANAGEMENT & FLOOD MITIGATION PLANNING, PROJECT DEVELOPMENT & FUNDING

ELOS is experienced in developing watershed management and flood mitigation projects, plans, and funding strategies that are focused on a variety of federal and state programs. Specific service offerings include:

- Louisiana Watershed Initiative (LWI) project development and grant applications
- Community Development Block Grant (CDBG) project development and grant applications
- FEMA (HMGP, BRIC, FMA) project development and grant applications
- Hazard mitigation planning
- Comprehensive funding strategies for watershed management and flood mitigation projects

POST-PROJECT SUPPORT

Our commitment extends beyond project completion, offering ongoing support to address any issues that arise and maintain the effectiveness of restoration and resilience initiatives.

INNOVATIVE TECHNOLOGIES



RENEWABLE ENERGY SITE SELECTION

Our team of experts is qualified to assist you in navigating the regulations and requirements involved in selecting and developing renewable energy sites. The site selection process involves carefully evaluating various factors, including resource availability, environmental considerations, and compatibility with land use. We specialize in providing expert guidance and support for selecting renewable energy sites and helping clients identify optimal project locations.

With a deep understanding of renewable technologies, environmental considerations, and local regulations, we ensure our clients can make informed decisions while adhering to the legal framework.

Our team guides clients through the permitting and compliance process, including preparing and submitting permit applications, conducting environmental impact assessments, and addressing concerns raised by regulatory authorities.

By providing a service encompassing technical expertise, regulatory knowledge, and stakeholder engagement, we empower our clients to identify and develop renewable energy sites that are both sustainable and compliant with the applicable regulations. We aim to empower clients to identify and develop renewable energy sites that comply with laws and meet their goals.



LEAK DETECTION & REPAIR (LDAR)

Reducing harmful emissions through Leak Detection and Repair (LDAR) services can minimize product loss, increase safety for facility infrastructure and operators, decrease toxic air pollutants in surrounding communities, reduce emission fees, and avoid any enforcement actions from regulatory agencies. We specialize in providing comprehensive LDAR services that help our clients detect and repair leaks efficiently and effectively.

GEOGRAPHIC INFORMATION SYSTEMS (GIS)

Geographic Information System (GIS) technology has revolutionized how we understand and analyze geospatial data, providing invaluable insights for decision-making and planning processes. We offer comprehensive GIS services that harness the power of geospatial data to assist clients across diverse industries.

Because of our expertise in GIS, we enable organizations to make informed decisions to optimize their operations by unlocking the potential of location-based data. We combine cutting-edge technology, advanced analytical tools, and a deep understanding of geospatial data to deliver tailored GIS solutions that meet the unique needs of our clients.

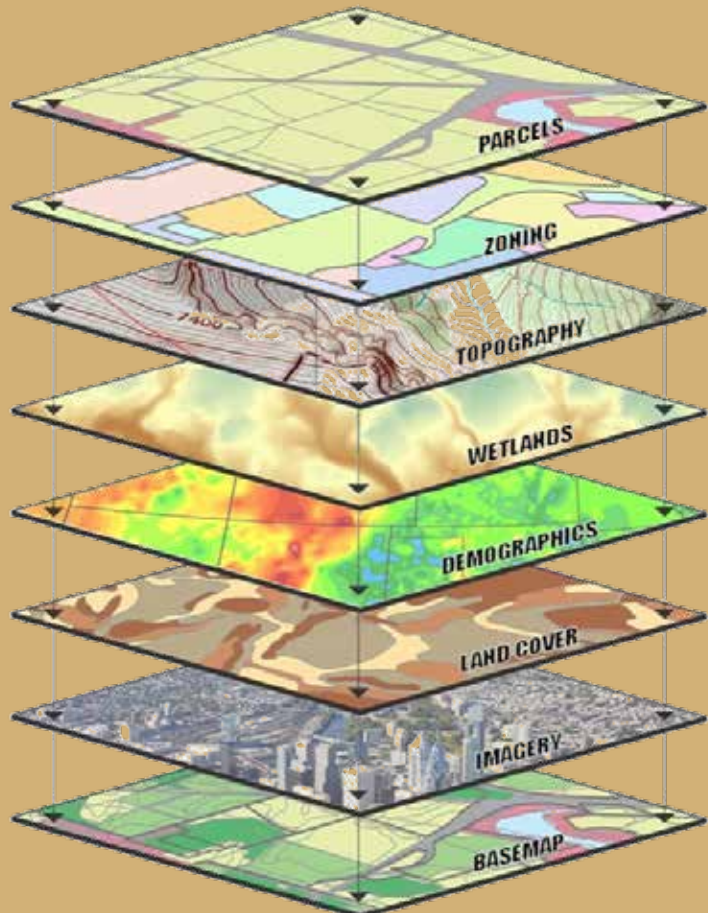
Our team of experienced professionals is equipped with the latest GIS technology to help our clients make informed decisions about their projects. We have a wealth of experience using GIS to support various consulting services, including site assessments, remediation planning, and natural resource management.

ELOS professionals have created permit maps for over 3,000 miles of waterways and have kept waterway cleanup progress maps up to date.

By using GIS, we can help our clients develop a more comprehensive understanding of their project site and identify potential risks and opportunities. From data collection and database development to geospatial analysis and custom map creation, we offer end-to-end GIS solutions that provide actionable intelligence and drive informed decision making.

In-house computer mapping and design capabilities and equipment include:

- AutoCAD
- ArcGIS 10.8
- ArcGIS Pro 3.0.1
- Survey 123
- Trimble TDC100
- Trimble R2 with RTX
- Mavic Pro 2
- Collector for ArcGIS
- Expert GPS



A white quadcopter drone is shown in flight, positioned in the upper left quadrant of the page. It is flying over a field of tall, green grass that fills the lower half of the image. The background is a clear, light blue sky. The drone has four rotors and a camera mounted underneath.

DRONE SERVICES

Drone technology has revolutionized various industries, offering unparalleled capabilities and opportunities for data collection, aerial imaging, and remote sensing. We provide comprehensive drone services that leverage the power of unmanned aerial vehicles (UAVs) to assist our clients in a wide range of applications. Our experienced drone pilots and data analysts are equipped with state-of-the-art drone technology to deliver accurate, efficient, and cost-effective solutions.

ELOS professionals have planned flights and flown over 3,000 miles of waterways in several parishes to identify and monitor waterway debris.

HOW MIGHT DRONES BE USED ACROSS THE PROJECT LIFECYCLE?

AERIAL SURVEYS & INSPECTIONS: Aerial surveys and data collation can quickly create models that allow teams to better understand project feasibility and whether design solutions are applicable. Such models are also useful in stakeholder and vendor briefings, indicating what finished projects will look like.

MAPPING & 3D MODELING: Our drone services generate highly precise maps and 3D models. These accurate and up-to-date representations provide valuable spatial data for various applications, including land surveying, urban planning, and environmental monitoring.

DESIGN: Designs can be overlaid and are informed by real-world data and on-site conditions. Where questions or doubts are present, adding greater fidelity to survey data or expanding the scope of previous datasets is easy.

ON-SITE MONITORING: Once a project is underway, drones can be used for many beneficial applications, including tracking progress, keeping tabs on materials, improving visibility, and monitoring the safety of workers. Drone footage also provides a useful audit trail should problems arise on the work site.

EMERGENCY RESPONSE & DISASTER MANAGEMENT: Drones are critical in emergency response and disaster management. Equipped with real-time video transmission and high-resolution cameras, our drones provide valuable information to assist with damage assessments. Drones assist emergency responders and decision-makers in assessing risks, coordinating efforts, and optimizing response strategies.

ABSTRACTING SERVICES

Abstracting services offer comprehensive knowledge and expertise in real estate acquisition for public work purposes. Our team is well-versed in the intricate laws, regulations, methods, and practices that govern these processes, ensuring that all procedures adhere to legal requirements and industry standards. This enables us to navigate complex real estate landscapes and provide invaluable insights into property ownership and transfers. Our ability to read and interpret engineering maps, records, condemnation plans, and property descriptions empowers us to uncover crucial details that may impact the viability and development of a potential piece of land or property.

As part of our comprehensive service offering, we conduct thorough research and evaluation of public records. This allows us to determine the legal status of a piece of land or property, assessing any encumbrances or restrictions that may affect its use or development. Moreover, we delve into zoning information, providing valuable insights into the permitted land uses and potential restrictions, enabling clients to make informed decisions.

With their combined experience and education, our team of professionals has assisted dozens of businesses and entities in “identifying the unidentifiable” through our services, which include:

- Deed search reports
- Vesting & legal search reports
- Assignment Verification Reports (AVR)
- Judgment & lien search reports
- Property tax status search reports
- Easements & restrictions search reports
- Current owner searches
- 10-, 20-, or 30-year search reports



Why Abstracting Services?

Communication lies at the heart of our services, and we pride ourselves on efficiently conveying difficult-to-obtain information. With strong interpersonal and public relations skills, we engage with clients and stakeholders to ensure clarity and understanding. Our adeptness in translating technical jargon into accessible language helps facilitate effective communication among every relevant party involved in real estate projects.

Clients can benefit from our expertise, professionalism, and attention to detail by leveraging our abstracting services. We strive to provide comprehensive and accurate information that empowers our clients to make informed decisions and navigate the complex landscape of real estate acquisition and appraisal.

An aerial photograph of a lush green wetland landscape with a winding waterway. A large, semi-transparent orange rectangle is centered on the image, containing white text.

Questions? Need a quote or
proposal? Want more information?

Contact us today at 985.662.5501 or email our
President of Business Development,
Drake Arnone, at
darnone@elosenv.com.

You can also visit our website at
www.elosenv.com.

We look forward to speaking with you.

- The ELOS Team

A full-page background image of a construction site. In the foreground, two workers, a woman and a man, are standing on a dirt and gravel surface. The woman is wearing a white hard hat, a light blue long-sleeved shirt, a bright yellow safety vest, and dark pants. She is holding a clipboard and looking at it. The man is wearing a yellow hard hat, a dark blue short-sleeved shirt, and dark blue overalls. He is also looking at the clipboard. Behind them is a large, complex structure made of yellow-painted steel beams and girders, which appears to be part of a bridge or a large industrial facility. The sky is clear and blue.

PROGRAM & PROJECT MANAGEMENT

PROGRAM MANAGEMENT

In today's complex and rapidly changing landscape, effective program management is crucial for organizations seeking to achieve their goals. At ELOS, we offer comprehensive program management services encompassing various critical areas, including grant management, disaster recovery, renewable energy site selection, coastal resilience, and FEMA Public Assistance, to name a few. Through our expertise and commitment to excellence, we provide tailored solutions to help our clients navigate the complexities of these programs, drive sustainable success, and make a meaningful difference.

We understand the unique challenges and opportunities that arise in each program management phase. Our expert team brings a wealth of experience, technical proficiency, and a collaborative approach to every project. We work closely with our clients, tailoring our services to their specific needs and objectives and providing comprehensive support throughout the project lifecycle.

Our proven methodologies, attention to detail, and ability to adapt to evolving requirements set us apart as a trusted partner for our clients. We are dedicated to empowering organizations to overcome challenges, seize opportunities, and positively impact their communities and the environment. We work closely with our clients to establish objectives and develop comprehensive plans. Our experienced project managers oversee all project activities, including scheduling, resource allocation, risk management, and stakeholder communication, ensuring that projects are completed on time, within budget, and to the highest standard of quality.



GRANT MANAGEMENT

ELOS provides professional grant management services to ensure that you are always in compliance. We specialize in providing comprehensive grant management services to help organizations navigate the complexities of grant funding and optimize their chances of success. We collaborate closely with our clients to identify federal and state funding opportunities for potential properties or projects that may be eligible for grants / incentives. We research the specifics and requirements of various grant programs to best match projects with the relevant offers.

FEMA PUBLIC ASSISTANCE

When disasters strike communities, the Federal Emergency Management Agency (FEMA) is crucial in providing assistance and support for recovery efforts. FEMA's Public Assistance (PA) program is designed to assist state, local, tribal, and territorial governments and certain private nonprofit organizations in their recovery and rebuilding endeavors. We specialize in helping communities navigate the universe of FEMA programs to maximize their eligibility and secure the necessary funding for a successful recovery.

We bring a current and knowledgeable perspective from working with our clients on high-profile issues related to catastrophic disasters. Our work includes preparing, reviewing, and retaining documentation for recipients of federal funds to comply with the following federal laws and regulations:

- Stafford Act
- Federal Code of Regulations (44 and 2 CFR)
- Public Assistance Program and Policy Guide Version 4
- FEMA policies and procedures
- Sections 404 and 406 Mitigation



We have and maintain experience in all areas and the systems used to track such data, such as the Louisiana Public Assistance (LAPA) portal, FEMA Grants Portal, and FEMA's Emergency Management Mission Integrated Environment (EMMIE) portal. Our in-depth knowledge of all available programs allows us to assist the applicant in grants management through Project Worksheet (PW) closeout.

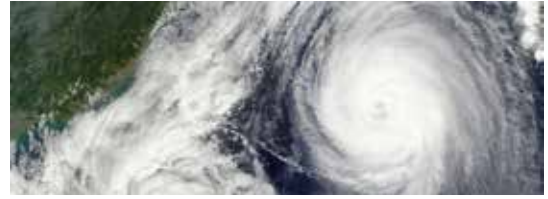
We provide clear policy interpretations and actionable recommendations, giving our clients quick results and the assurance that recovery funds are used following governing regulations. We also have experience assisting areas facing a high risk of disaster in preparing for and mitigating possible damage. Our employees are equipped to conduct damage assessments for vital infrastructure and to analyze disaster assistance applications.

By partnering with us, communities can benefit from our expertise, maximize their reimbursement potential, and expertly navigate FEMA processes.

DISASTER RECOVERY

Whenever disaster strikes, our team aims to be the first on-site to service our clients. We are prepared to answer any needs, including:

- Water damage surveys
- Mold, lead, and asbestos testing
- Emergency permits
- Managing debris removal monitoring efforts



We are well-versed in coordinating with stakeholders, regulatory agencies, and contractor crews to ensure all recovery activities comply with FEMA and other relevant stakeholder guidance, as well as local, state and federal regulations.

Because ELOS was founded in and is based in a disaster-prone area, we intimately understand the critical nature of disaster recovery and the need for comprehensive and strategic approaches. By partnering with us, clients can benefit from our knowledge and support to navigate the complexities of disaster recovery, build resilience, and foster a successful recovery process.

The documentation of debris that ELOS has completed throughout multiple parishes in Louisiana has resulted in millions of dollars of funding from the National Resources Conservation Service (NRCS) to remove waterway debris across Louisiana.

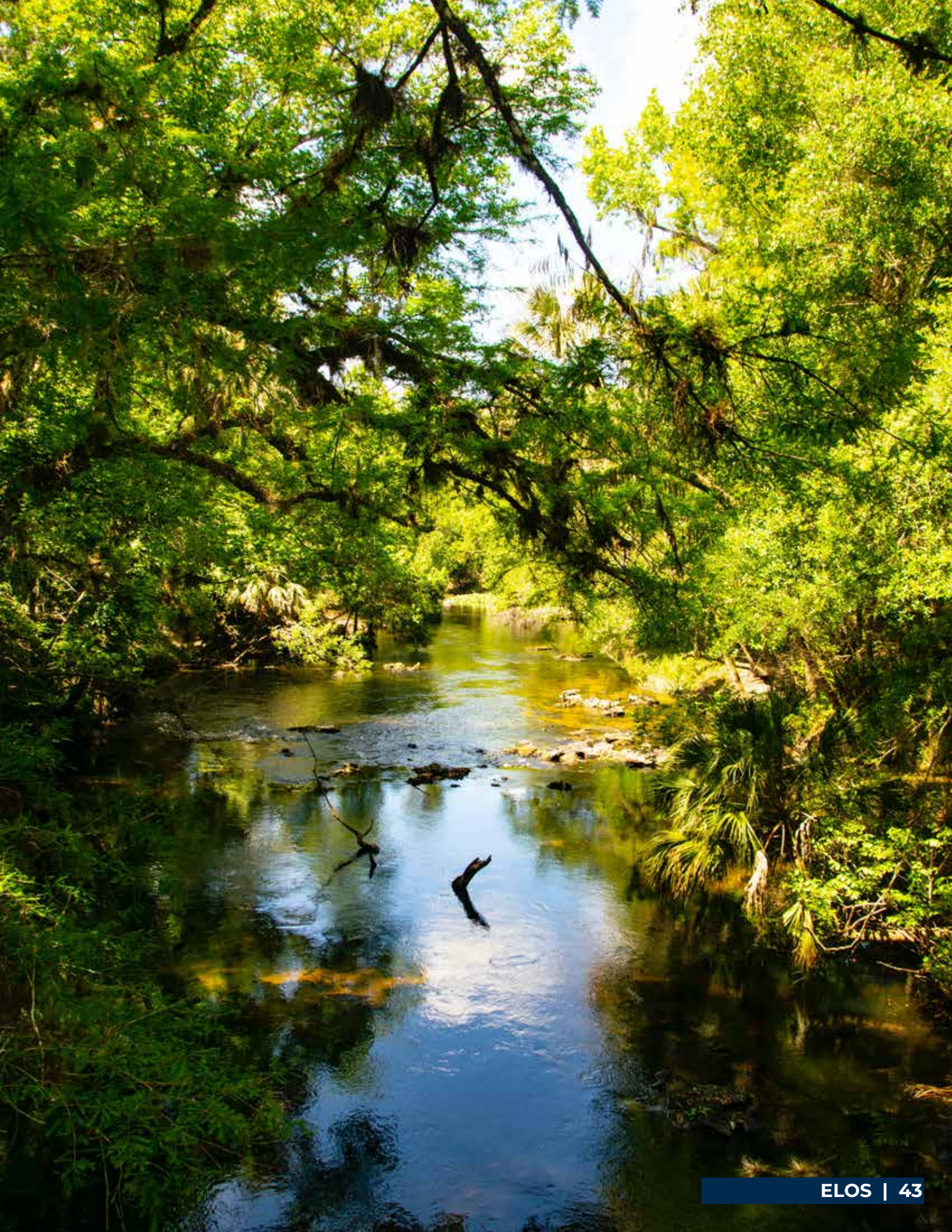
CONSTRUCTION MANAGEMENT

Construction management support services provided by ELOS are intended to support your project's achievement, maintenance, and documentation of regulatory and guideline compliance and identify, allocate, and track construction activities.

ELOS understands that one of the most crucial components of a quality project is competent and comprehensive inspection. While familiarity with specifications, materials, and methods to be employed are all necessary for a proper inspection, our technical proficiency — as well as good judgment and effective communication skills — is a key component of our success-driven approach to construction management.

Services provided by ELOS for construction management support include:

- Confirming adherence to the client's safety policy and regulations for all crew members
- Verifying and approving quantities of materials used for contractor pay requests
- Managing contractor crews
- Confirming adherence to plans, specifications, & regulations
- Providing progress reports and meetings to client
- Reconciling contractor payment applications and approved quantities for payments
- Investigating discrepancies and change order requests
- Negotiating change order requests
- Conducting field inspections to identify the materials used, identify potential issues, and verify the work's quality





607 W. Morris Avenue
Hammond, LA 70403

409 Green Street
Thibodaux, LA 70301

P. 985.662.5501
F. 985.662.5504

www.elosenv.com

